

Yellowstone Area Map

Helpful Resources

Primary Medical Facilities

- Eastern Idaho Regional Medical Center, 3100 Channing Way, Idaho Falls (208) 529-6111
- Madison Memorial Hospital, 450 E. Main St., Rexburg (208) 356-3691
- Mountain View Hospital, 2325 Coronado St., Idaho Falls (208) 557-2700
- Teton Valley Hospital and Surgicenter, 120 E. Howard, Driggs (208) 354-2383

Visitor Centers

- Ashton Chamber of Commerce, 714 Main St., Ashton (208) 652-3355
- Ashton Visitor Center, 828 Hwy. 20, Ashton (208) 652-7520
- Clark County Visitor Center, Dubois (208) 374-5267
- Eastern Idaho Visitor Center, 630 W. Broadway, Idaho Falls (208) 523-1012
- Idaho Falls Chamber of Commerce, 630 W. Broadway, Idaho Falls (208) 523-1010
- Idaho Falls Convention and Visitors Bureau, 630 W. Broadway, Idaho Falls (866) 365-6943
- Idaho Falls LDS Temple and Visitor Center, 1000 Memorial Dr., Idaho Falls (208) 523-4504
- Idaho Falls Parks and Recreation, Idaho Falls (208) 525-7121

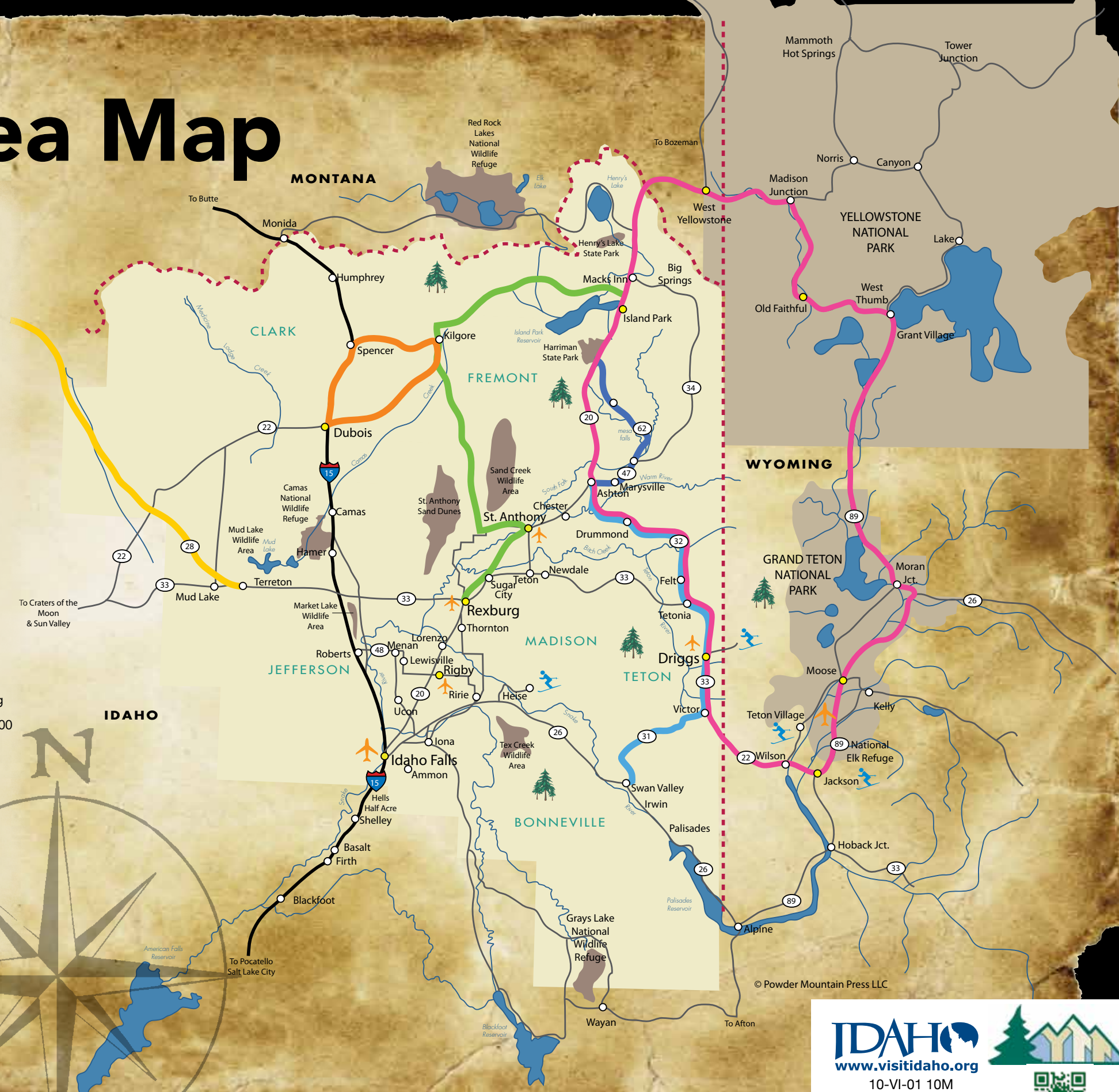
- Island Park Chamber of Commerce, Island Park (208) 558-7755
- Rexburg Area Chamber of Commerce, 127 E. Main, Rexburg (208) 356-5700
- Rigby Chamber of Commerce, Rigby (208) 745-8111 ext. 21
- St. Anthony Chamber of Commerce, 420 N. Bridge St., St. Anthony (208) 624-4870
- Swan Valley Visitor Center, visitswanvalleyidaho.com, (800) 277-9041
- Teton Valley Chamber of Commerce, 255B S. Main St., Driggs (208) 354-2500
- Yellowstone Teton Territory, 127 E. Main St., Rexburg (800) 634-3246

Other Governmental Resources

- Idaho Department of Parks and Recreation: (208) 334-4199
- Idaho Fish and Game: (800) 554-8685
- Idaho State Parks Reservations: (888) 922-6743
- National Parks Services: nps.gov.
- Public Lands Information Center: publiclands.org
- U.S. Bureau of Land Management: (208) 373-4000

Legend

- Scenic and Historic Byways
- Fort Henry Historic Byway
- Lost Gold Trails Loop
- Mesa Falls Scenic Byway
- Sacajawea Historic Byway
- Teton Scenic Byway
- Yellowstone-Grand Teton Loop
- 🌲 National Forests
- ⛷️ Ski Areas
- ✈️ Airports
- 👤 Visitors Center



© Powder Mountain Press LLC

IDAHO
www.visitidaho.org

10-VI-01 10M
For additional information on Idaho call 1-800-VISIT-ID